

This week's news...

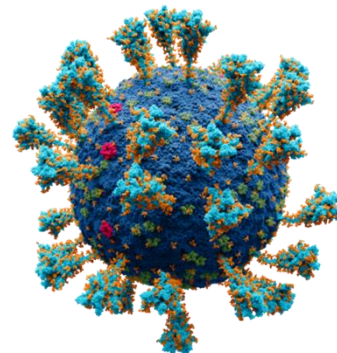


August 12, 2021

Dear Friend,

Delta Deja Vu!

Due to the spike in COVID-19 infections, the COVID Response Team (CRT) met last evening to craft a path forward that maintains the congregation's ability to gather for worship yet also protects the most vulnerable among us, our children and those with medical conditions that prevent vaccination. Here is a synopsis of the decisions which were made with the overarching goal of doing everything possible to tamp down the outbreak and insure that children and youth return to school.



Worship

- Beginning this Sunday, the church will revert to the standards in place in June.
- Masks are required for everyone entering the building. No exceptions. Mask must cover nose and mouth.
- Chairs will be 6' apart. Family groups may gather closer.
- Passing of the Peace will be distanced
- No congregational singing
- Worshipers are asked to leave Fellowship Hall as soon as possible at the close of the service
- If you are unvaccinated, or not feeling well, please enjoy the service by streaming remotely
- Move to the sanctuary is delayed until October 10, 2021 at the earliest

Sunday School and Youth Groups

- Will not meet inside until October 10, 2021 at the earliest
- Confirmation Class may also be delayed

Church Building

- Masks are required everywhere inside unless in a private office and have been vaccinated
- No group meetings are permitted except for contracted support groups

Choirs

- Proof of vaccination is required to participate in voice choirs. No exceptions.
- Young children's choirs may practice outside, masked, and distanced.
- Bell choirs may practice masked and distanced. Proof of vaccination not required.

The CRT recognizes that the above restrictions are severe yet they enacted them with the intent of doing everything possible, short of closing the building, to quell the spread. What's clear to everyone is the need to get vaccinated. That remains the only path to full return to congregational life.

Be well and stay safe!



THE NOMINATING COMMITTEE IS HAPPY TO ANNOUNCE A SLATE FOR THE PNC

The nominating committee has been hard at work and has identified the following church members to serve on the Pastor Nominating Committee:

Pete Hurd
Brian McGlade
Bud Miller
Deb Nussbaum

Margaret O'Neil
Andy Reinicker
Maggie Sell
Rebeca Silva de Foote

Photos and bios will be available next week. There will be a congregational meeting on **Sunday, August 29**, in person and on Zoom for the purpose of electing the PNC. Meeting details to come. Many thanks to the nominating committee, chaired by Betsy Westermaier: Quint Lerch, Linda Hess, Amy Stedman, Jayne Grabowski, Joyce Stout, Chuck Bell, and Doug Gerdts, ex officio

JOIN NIKKI'S WORKSHOPS ON PRAYER

Pastor Nikki will hold three **Equipping Workshops** on prayer for people who wish to deepen their life of faith, spiritually strengthen relationships, and develop a compassionate posture to all God's children. Each week participants will be introduced to a different prayer technique, and we will hear what Jesus, Thomas Merton, Richard Rohr, and C.S. Lewis, among others, have to say about prayer. Workshops meet at **6:30 on Thursday evenings** on Zoom:

- August 12th: Prayer Workshop #1
- August 19th: Prayer Workshop #2
- August 26th: Prayer Workshop #3 – *Guest Speaker Laraine Thulin will be our guest facilitator. Laraine is the Leader for the Prayer Ministry Team at Excelsior Covenant Church in Minnesota.*

CONVERSATION ON RACE MEETS NEXT ON AUGUST 22



MATTHEW 25

The Conversation on Race is held every other week after church in the choir room. We are discussing Oprah's Bookclub podcast with Isabel Wilkerson on Wilkerson's book Caste. All are welcome, regardless of whether you have joined prior conversations on race or not.

Questions? Contact Becky Bryan.

THANKS FROM LINDA O'NEILL: *Gene and I are very grateful for the outpouring of support, including prayers, cards, meals, rides, calls and visits, from church friends and pastoral staff!!*



MISSION TRIP LEADER MEETING

Calling all past, present, and future Mission Trip Leaders (includes both chaperones and organizers) to join us on Tuesday, August 24, at 7 p.m. in Fellowship Hall to discuss the 2022 Mission Trip. Any questions, please contact Gabrielle Heimerling at gheimerling@haddonfieldpres.org.

TEEN AND ADULT VOLUNTEERS NEEDED!

Children's Church: Volunteers are needed to teach our young friends each Sunday during the worship service. All that is needed is a willingness to read a story and facilitate a craft. Gabrielle Heimerling will provide you with everything you need to help with the class – all we need is you! All classes will take place in the CE Room (formerly the yoga room) on the lower level.

Nursery Staff: We are looking for people to help staff our nursery as some of our current wonderful nursery helpers are headed off to college in the fall. Ideal candidates will be high school aged or older with ample babysitting experience and/or certification. Must love babies and toddlers! Please reach out to Gabrielle Heimerling for more details at gheimerling@haddonfieldpres.org.

Sunday School Teachers: We are already looking toward the fall and bringing back in person Sunday School! Volunteers are needed to teach our young friends in grades PreK through 8th. All that's needed is a willingness to teach and we will provide the curriculum, teaching manuals, and supplies. Any questions, please reach out to Gabrielle Heimerling at gheimerling@haddonfieldpres.org.

A GUIDE THROUGH THE NEW TESTAMENT, Mondays from 11:00 a.m. to noon on [Zoom](#). Questions? Contact [Doug](#).

DOUG'S TUESDAY MORNING BIBLE STUDY (8 a.m. [via Zoom](#)) is ongoing and open to all. The text for the coming week is John 6:56-69.

THERE WILL BE AN IN-PERSON STEPHEN MINISTRY INTEREST MEETING on Thursday, Sept. 2 at 6:30. Watch for more information in the coming weeks.

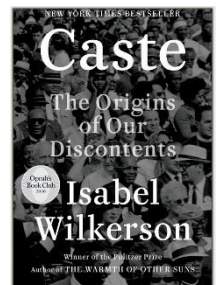
PASTOR NIKKI'S BOOK STUDY on Richard Rohr is ongoing, Wednesdays @7:30 p.m., [Zoom link](#)

PASTOR NIKKI'S BIBLE STUDY RESUMES September 16.

PORCH BIBLE STUDY RESUMES IN SEPTEMBER The Porch Study will resume on Zoom on Tuesday, September 14. We will also meet on Tuesday, September 28, and Tuesday, October 12. We will be starting with Philippians, Chapter 3. Meetings start at 7 p.m. and end by 8:30 p.m. All are welcome. If you are new and don't yet have the link, contact the church office.

MATTHEW 25 BOOK STUDY FOR FALL

The congregation is invited to read Isabel Wilkerson's book *Caste*, in preparation for a book discussion in early September. Wilkerson began researching the construct of caste as a better way to capture race relations in our country after writing her award-winning book *The Warmth of Other Suns* and hearing the word used repeatedly by her sources. Is "caste" a better way to describe U.S. race culture? Is discussing caste emotionally easier than discussing racism? Please make this book one of your summer reads and look forward to a thought-provoking conversation.



BACKPACK AND SCHOOL SUPPLIES COLLECTION

The Mission Committee is collecting for kids served by Camden Community Center and St. Wilfrid's. Look for sales when you shop and bring donations with you to worship or drop off on Sundays at 11, office-side door. Needed items include:

- Erasers
- Colored Pencils
- Crayons
- Glue Sticks
- Handheld Pencil Sharpeners
- Pencil Box or Pouch
- 3-Ring Binders – 1" or 1 ½ "
- Loose Leaf Filler Paper – Wide Rule
- Calculator
- Washable Markers
- Watercolor Paint
- Art Smock
- 12" Ruler
- Junior Scissors with 5" Blunt Tip
- Pocket Folders
- Composition Notebooks
- Tissue Packets
- Backpacks (the biggest need is for Grades 3-8)

ST. WILFRID'S OPEN DOOR CLINIC

We go to The Food Bank of SJ in Pennsauken on several Friday's each month at 8:00 a.m. We need drivers/vehicles to help pickup food and take back to St Wilfrid's which is several miles from food bank. This time frame is usually 8 a.m. to 9 -9:30. If you have a vehicle but have a problem carrying boxes we will gladly load up your car at the food bank and unload at St Wilfrid's.

Every Saturday from 8 a.m. to noon a group of volunteers of all ages gives out food and other items to those in need. Each week we get boxes of diapers for kids/adults, sanitary pads and other items. All these items need to be put into smaller portions and put into a plastic bag. We give so much of these items out each week so the bagging up into smaller portions needs to be done on site at St Wilfrid's. It is done inside in a safe/clean big room.

Some of our clients only speak Spanish so we need interpreters to help commute with them. Our clients are given everything outside the building. We ask all our clients and volunteers to wear a face mask and keep a distance from each other.

If you are interested in volunteering please contact Rose Guthrie 609-760-4324 or intrepidrose@hotmail.com. Thanks

This week marks the **73rd straight week** that the Open Door Clinic at St Wilfrid's has distributed food during the pandemic; **112 bags, 6,783 total. Over 169,575 pounds** of food and dry goods, distributed by the all-volunteer, everything-donated, nobody-gets-paid Open Door Clinic at St. Wilfrid's. Thank you all for your generous collections and contributions.

There is a Foodbank pick-up next Friday, August 20. Please contact Rose if you have questions or can help: email at intrepidrose@hotmail.com. Thanks to all the wonderful crew who picked up last Friday. You all know how important it is to the effort to "love your neighbor." And it is fun, believe it or not.

Fans: The Open Door Clinic distributed 3 fans Saturday, bringing the total distributed this year to **152**. Each patron gets only one. Thank you to all. We gather goodwill and blessings from above. We also gave a gently used air conditioner to an older client.

Needs: Currently we need cold cereal, pasta, sauce, bar soap, baby wipes, and diapers (especially size 2 and 6). Plastic grocery bags from Shoprite or Wegman's are needed as are paper grocery bags to line the plastic bags and newspaper bags to hold hygiene items. Donations may be dropped off weekdays in the bin behind Grace Episcopal Church in the PATCO parking lot OR on Sundays at the table outside Fellowship Hall or after services on the cart near bench beside the door on the Masonic Temple side of church until 12 noon

If you would like to know more ways to help, call Jill Mascena at 856-428-7342 and leave a message—she will get back to you—or check the website: opendoorcliniccamden.org

GOOD NEWS FOR ST. WILFRID'S – J.J. from Misfits Market on Cooperstown Road in Delanco will be making a sizable weekly food donation. Thank you, Travis, for securing this gift—and being around to collect it each week!

CONGREGATIONAL PRAYER LIST

Please keep members and friends of the congregation in your prayers. The weekly Prayer List is available in Sunday's bulletin or online [here](#). If you would like to add a personal prayer request, please contact one of the pastors or Anne Vial. Please obtain the permission of the person needing prayer. *The [Prayer Request portal](#) on the website is still available for private requests sent directly to the pastors.*

WEEKLY CALENDAR

- Aug 12 – 6:30 p.m. Equipping Workshop – Prayer Workshop #1
- Aug 15 – 10 a.m. In-person and Online Worship
- Aug 16 – 11 a.m. New Testament Class
- Aug 17 – 8 a.m. Doug's Bible Study
- Aug 18 – 7:30 p.m. Richard Rohr book study with Nikki
- Aug 19 – 6:30 p.m. Prayer Workshop #2
- Aug 22 – 10 a.m. In-person and Online Worship



GUIDELINES FOR IN-PERSON WORSHIP

If you are unvaccinated or don't feel well, please worship online.

ARRIVAL AND DEPARTURE:

- **Users of stairs:** Enter and exit through the side entrance on the Playground Side.
- **Elevator users:** Enter and exit through the Masonic Temple side of the building.
- **Exiting:** Deacons and ushers will excuse by row so that distancing can be maintained. Follow signs and ushers to proper exit. Please take all conversations outside.

DRESS CODE:

- **Congregants: Masks are required** at all times inside the building (if you are over 2). Please BYO – we'll have a limited number of extras just in case.
- **Worship Leaders:** Masks are required until they reach the area where they are isolated from contact with the congregation.

Per CDC Guidelines a mask must completely cover the nose and mouth, fit snugly against the sides of the face with no gaps and should not have valves or vents. (Bandanas, scarves, and face shields alone are not sufficient.)

DURING WORSHIP:

- **Seating:** Chairs will be set up six feet apart. Family units can pull chairs together if they wish.
- **Singing:** Nope – leave it to the professionals.
- **Praying:** Out-loud corporate prayers (Confession, Lord's Prayer, etc.) – This one is a yes!
- **Sharing the Peace of Christ:** Use a peace sign, a bow, a pantomime, a wave, or other sign of Christ's love, but please stay six feet apart.
- **Offering:** Look for offering baskets when you enter or exit. Or give online.
- **Communion:** Elements will be individually and safely packaged – instructions will be given!